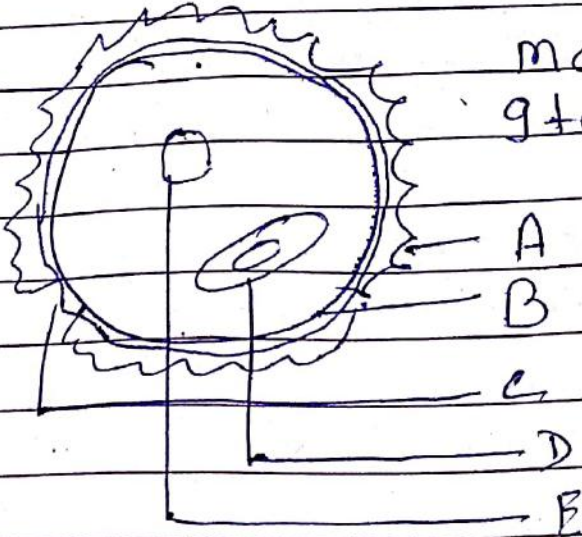


TEST

1. Give the other name of the following
- a) pollen sacs
 - b) ovule
 - c) pollen grains
 - d) Embryo sac

2.



Mature pollen grain
Identify the part labelled

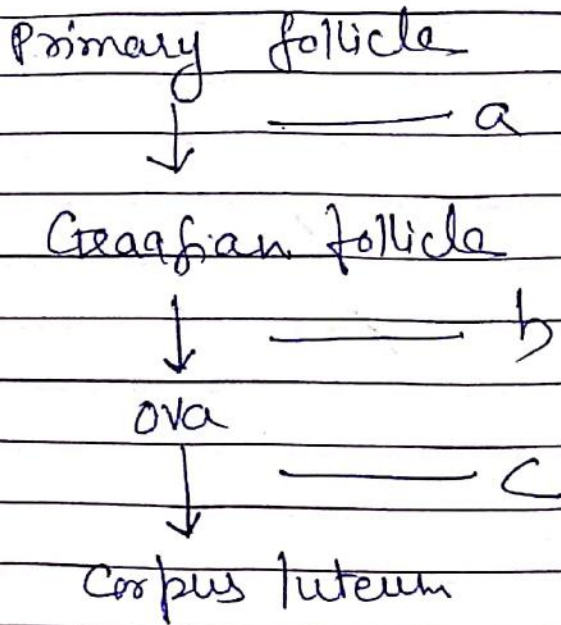
3. Explain the function of above ~~part~~ written different parts.

4. Write the difference between the embryos of dicot & monocot.

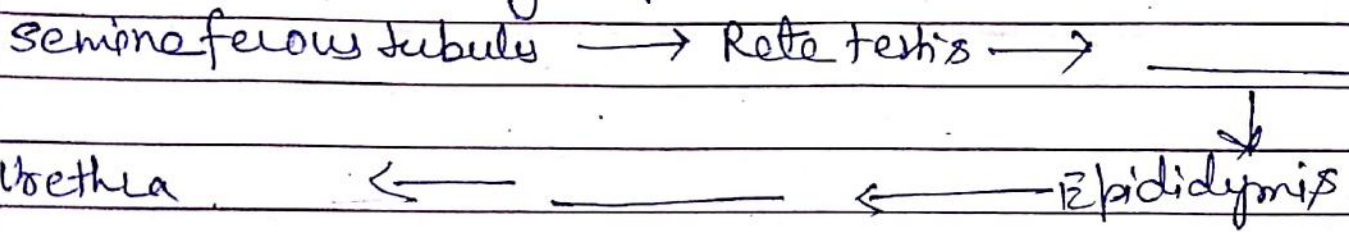
5. Name the function of the following.
- a) Corpus luteum
 - b) Endometrium
 - c) Acrosome
 - d) sperm tail
 - e) Fimbriae

6. Differentiate between →
- i) vas deferens & vas efferentia
 - ii) spermatogenesis & spermiogenesis

7. Give below is a flow chart showing ovarian changes during menstrual cycle, fill the spaces with the hormonal factor(s) →



8. Fill the missing space —



9. Why is tubectomy considered a contraceptive method?

10. Expand a) IUD, b) ART, c) GIFT

d) ICSI e) RTI f) IUI