

Female accessory ducts -

Oviducts (Fallopian tubes)

uterus & vagina ↓

10-12 cm long

extends from periphery to each ovary to uterus.

3 parts -

1. Infundibulum (funnel shaped)

Fimbriae (finger-like projections)
↳ collection of ovum

2. Ampulla

3. Isthmus

Uterus (Womb)

Shape - inverted pear

open into vagina through a narrow cervix

Cavity of cervix - cervical canal

cervical canal & vagina → birth canal

uterus - made up of 3 layers of tissue

Perimetrium - External thin memb^l

Myometrium - middle thick layer of smooth muscle.

Endometrium - inner glandular layer

External genitalia - mons pubis,

labia majora, labia minora, clitoris.

Mammary glands - a pair

↓
Glandular tissue & variable amount of fat

↓
15-20 mammary lobes

↓
clusters of cells → alveoli

↓
secrete milk

stored in the cavity of alveoli
open in to mammary tubules.

↓
tubules join to form mammary duct

↓
mammary duct - join Ampulla

↓
Lactiferous duct - → milk sucked out.

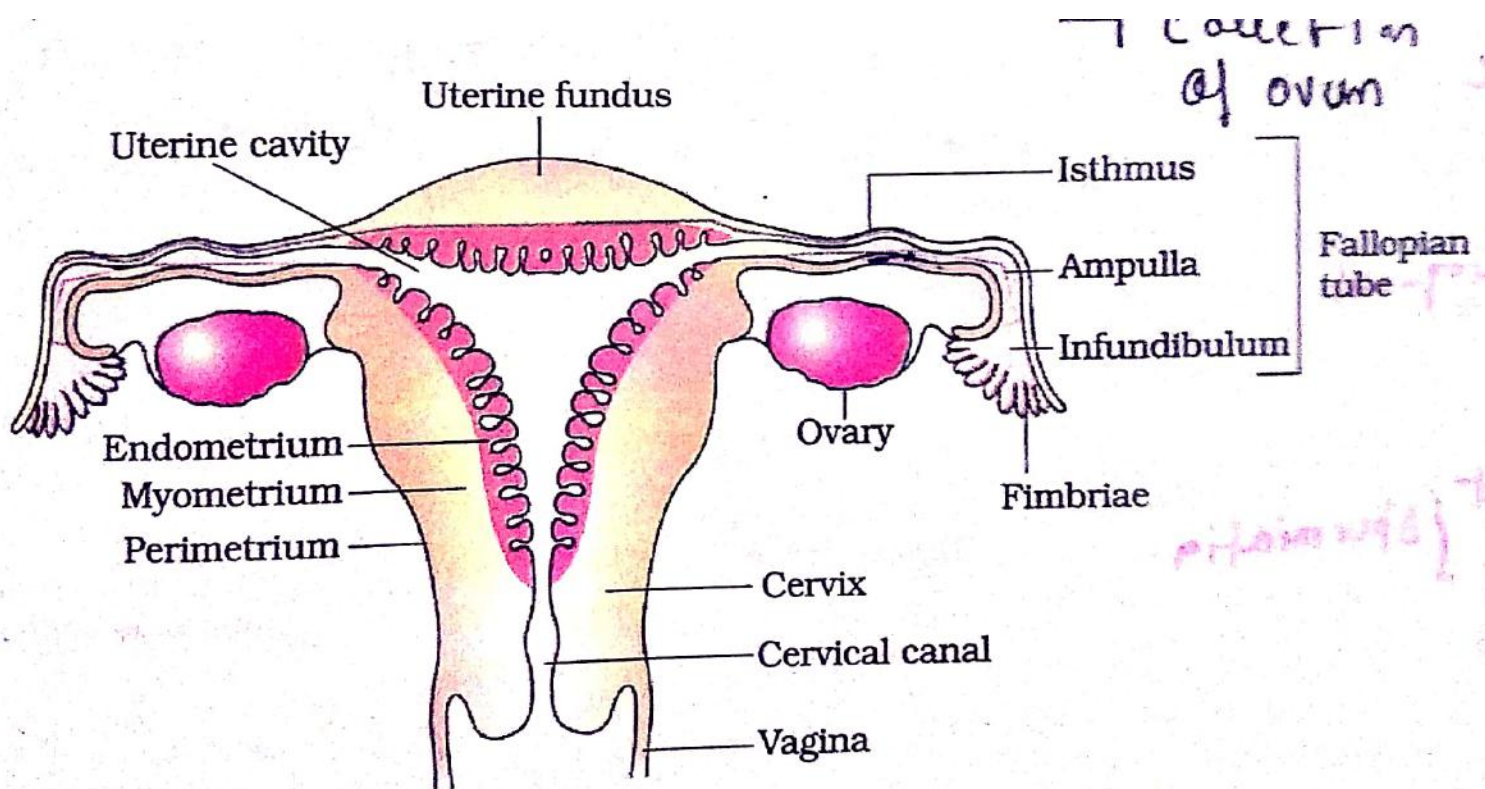


Figure 3.3 (b) Diagrammatic sectional view of the female reproductive system

(23) - (2)

otic
y.
ermiogenesis
a

out } Spermiatig.
D.T

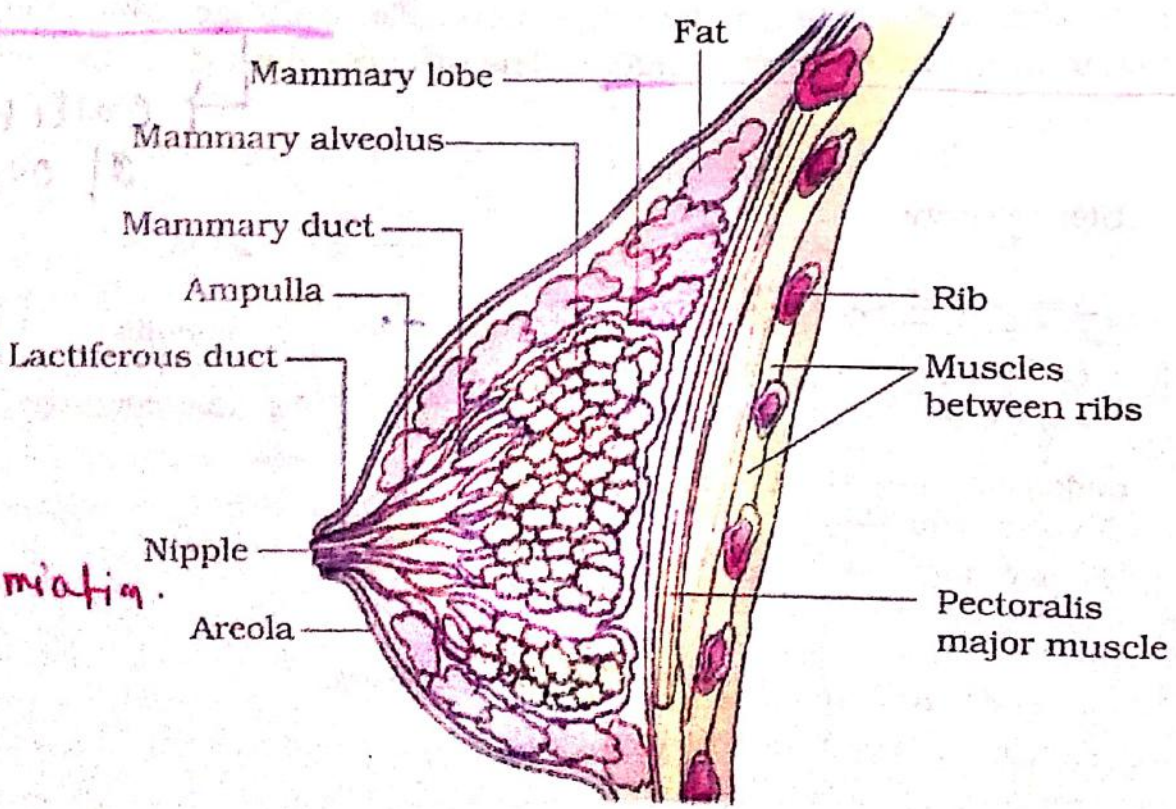


Figure 3.4 A diagrammatic sectional view of Mammary gland