

The Female Reproductive System

Consists of -

- a pair of ovaries
- a pair of oviducts
- uterus
- cervix
- vagina
- External genitalia

Located in Pelvis region

Mammary gland - support - the process of ovulation, fertilisation, pregnancy, birth & childcare.

Ovaries → Prisex organs

↓
Produce gametes (ovum) & ovarian hormones.

Located one on each side of - lower abdomen

2 to 4 cm in length

connected - pelvic wall & uterus by ligaments.

Covered by thin epithelium

↓
encloses the ovarian stroma

a peripheral cortex inner medulla

3.2 THE FEMALE REPRODUCTIVE SYSTEM

The female reproductive system consists of a pair of **ovaries** along with a pair of **oviducts, uterus, cervix, vagina** and the **external genitalia** located in pelvic region (Figure 3.3a). These parts of the system along with a pair of the **mammary glands** are integrated structurally and functionally to support the processes of ovulation, fertilisation, pregnancy, birth and child care.

Ovaries are the primary female sex organs that produce the female gamete (ovum) and several **steroid hormones** (ovarian hormones). The ovaries are located one on each side of the lower abdomen (Figure 3.3b). Each ovary is about **2 to 4 cm in length** and is **connected to the pelvic wall and uterus by ligaments**. Each ovary is covered by a thin epithelium which encloses the **ovarian stroma**. The stroma is divided into two zones – a **peripheral cortex** and an **inner medulla**.

HUMAN REPRODUCTION

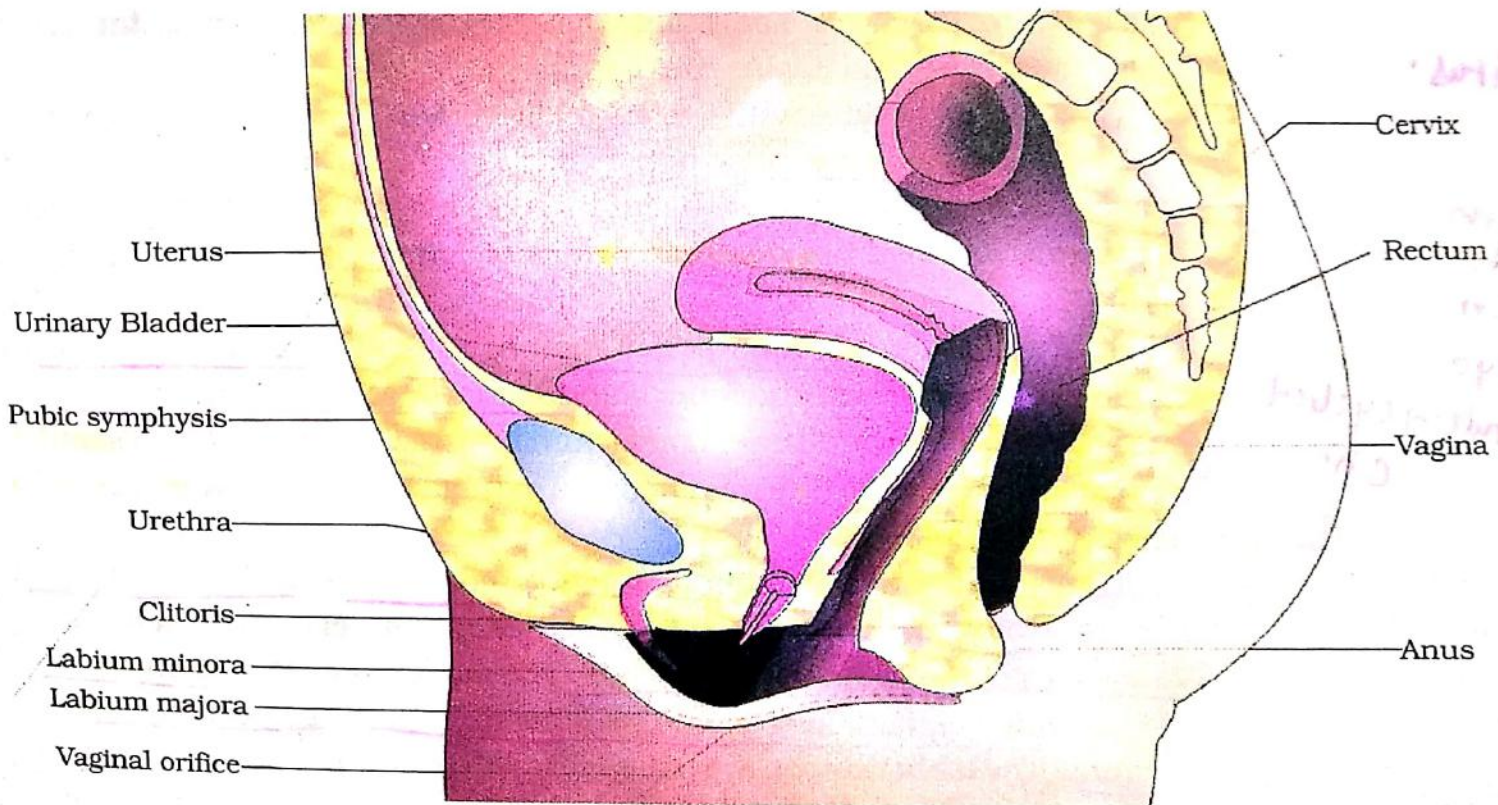


Figure 3.3 (a) Diagrammatic sectional view of female pelvis showing reproductive system